

CAPÍTULO 4: REPIQUES

CHAPTER 4: REPIQUES

El trémolo y el repique son recursos muy característicos del charango. El repique, en cierto modo, es una porción breve de trémolo, que define claramente la personalidad rítmica del instrumento y lo diferencia notoriamente de la guitarra al momento de rasguear.

Para anotar el repique, hemos elegido la letra “R”. Cabe señalar que tanto el repique como el trémolo se ejecutan siempre sobre acordes.

The strummed tremolo and the repique are two of the most important Charango techniques. Essentially, the repique is a small portion of a strummed tremolo. It is one of the techniques that most differentiates the strumming practice of the Charango from that of the guitar.

In the scores of this method, the letter “R” indicates repique. Both strummed tremolos and repiques are played with chords.

REPIQUE DE CUATRO MOVIMIENTOS

THE FOUR MOVEMENT REPIQUE

En 2/4 y 6/8



In 2/4 and 6/8

En 3/4



In 3/4

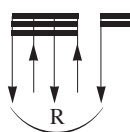
Notar que en este repique el último movimiento es hacia arriba.

Note that in this repique the last movement is played upwards.

REPIQUE DE CINCO MOVIMIENTOS

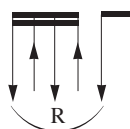
THE FIVE MOVEMENT REPIQUE

En 2/4 y 6/8



In 2/4 and 6/8

En 3/4



In 3/4

Este repique es sutilmente más largo que el repique de cuatro movimientos. Notar que el último movimiento es hacia abajo. Dependiendo del contexto en el que se encuentre el repique, el quinto movimiento en un compás de 6/8 podrá ser una corchea o una semi-corchea.

This five movement repique is slightly longer than the four movement repique. Note that the last movement is made downwards. Depending on the context in which this repique is used, the fifth movement in 6/8 may be either an eighth note or a sixteenth note in length.

Fragmento de "Sipassy" (Roberto Márquez-Illapu).

The diagram illustrates a guitar exercise in 3/4 time, consisting of several measures with specific chord voicings and rhythmic patterns.

- Measure 1:** Chord C (C major). Rhythmic pattern: triplet of eighth notes (up, down, up) followed by a quarter note (up). A slur labeled 'R' covers the triplet.
- Measure 2:** Chord G (G major). Rhythmic pattern: triplet of eighth notes (up, down, up) followed by a quarter note (up). A slur labeled 'R' covers the triplet.
- Measure 3:** Chord D7 (D dominant seventh). Rhythmic pattern: triplet of eighth notes (up, down, up) followed by a quarter note (up). A slur labeled 'R' covers the triplet.
- Measure 4:** Chord F (F major). Rhythmic pattern: triplet of eighth notes (up, down, up) followed by a quarter note (up). A slur labeled 'R' covers the triplet.
- Measure 5:** Chord C (C major). Rhythmic pattern: triplet of eighth notes (up, down, up) followed by a quarter note (up). A slur labeled 'R' covers the triplet.
- Measure 6:** Chord F (F major). Rhythmic pattern: triplet of eighth notes (up, down, up) followed by a quarter note (up). A slur labeled 'R' covers the triplet.
- Measure 7:** Chord G (G major). Rhythmic pattern: triplet of eighth notes (up, down, up) followed by a quarter note (up). A slur labeled 'R' covers the triplet.
- Measure 8:** Chord C (C major). Rhythmic pattern: triplet of eighth notes (up, down, up) followed by a quarter note (up). A slur labeled 'R' covers the triplet.
- Measure 9:** Chord F (F major). Rhythmic pattern: triplet of eighth notes (up, down, up) followed by a quarter note (up). A slur labeled 'R' covers the triplet.
- Measure 10:** Chord G (G major). Rhythmic pattern: triplet of eighth notes (up, down, up) followed by a quarter note (up). A slur labeled 'R' covers the triplet.
- Measure 11:** Chord C (C major). Rhythmic pattern: triplet of eighth notes (up, down, up) followed by a quarter note (up). A slur labeled 'R' covers the triplet.
- Measure 12:** Chord E7 (E dominant seventh). Rhythmic pattern: triplet of eighth notes (up, down, up) followed by a quarter note (up). A slur labeled 'R' covers the triplet.
- Measure 13:** Chord E7* (E dominant seventh with natural 7th). Rhythmic pattern: triplet of eighth notes (up, down, up) followed by a quarter note (up). A slur labeled 'R' covers the triplet.
- Measure 14:** Chord Am (A minor). Rhythmic pattern: quarter note (up), quarter note (up), quarter note (up). A slur labeled '1ª vez' covers the first three notes.
- Measure 15:** Chord Am (A minor). Rhythmic pattern: quarter note (up), quarter note (up), quarter note (up). A slur labeled '2ª vez' covers the first three notes.
- Measure 16:** Chord F (F major). Rhythmic pattern: triplet of eighth notes (up, down, up) followed by a quarter note (up). A slur labeled 'R' covers the triplet.
- Measure 17:** Chord G (G major). Rhythmic pattern: triplet of eighth notes (up, down, up) followed by a quarter note (up). A slur labeled 'R' covers the triplet.
- Measure 18:** Chord C (C major). Rhythmic pattern: triplet of eighth notes (up, down, up) followed by a quarter note (up). A slur labeled 'R' covers the triplet.
- Measure 19:** Chord E7 (E dominant seventh). Rhythmic pattern: triplet of eighth notes (up, down, up) followed by a quarter note (up). A slur labeled 'R' covers the triplet.
- Measure 20:** Chord E7* (E dominant seventh with natural 7th). Rhythmic pattern: triplet of eighth notes (up, down, up) followed by a quarter note (up). A slur labeled 'R' covers the triplet.
- Measure 21:** Chord Am (A minor). Rhythmic pattern: quarter note (up), quarter note (up), quarter note (up).
- Measure 22:** Chord Am (A minor). Rhythmic pattern: quarter note (up), quarter note (up), quarter note (up).

Chord diagrams are provided for C, G, D7, F, C*, F, G, C, E7, E7*, and Am. The Am diagram shows the first three notes of the first measure. The C, G, D7, and F diagrams show the first three notes of their respective measures. The C* diagram shows the first three notes of the fourth measure. The E7 and E7* diagrams show the first three notes of their respective measures.